

The College of DuPage Human Services & The Community Network: Professionals
Supporting LGBTQ Youth Present:

Discovering Heroes, Creating Allies:
Interpersonal Violence and Systems Response

Interpersonal Violence

Dr. Erin Williams, Psy.D., LCP, Director of VOICE Sexual Assault Program will provide a presentation focusing on the effects of interpersonal violence/bullying on youth development. From defining the types of violence young people face to exploration of risks and protective factors, Dr. Williams will offer a comprehensive look at the consequences of violence on adolescent development.

Systems Response

A panel of medical and educational advocates, law enforcement and social service providers will discuss best practices in providing support services to various youth populations around the issue of interpersonal violence/bullying. Local experts who work with gay, lesbian, bisexual, transgender and questioning youth, youth who are homeless, youth with familial addiction and/or mental illness and gang membership will share current trends and recommendations for best practice.

Presenting:

Kathy Kempke, Manager of Sexual Violence and Support Services, YWCA Metropolitan Chicago
Patterson and McDaniel Family Center, Glendale Heights, IL

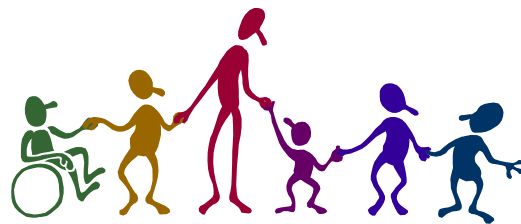
Deb Carr, Residential Programs Director, NCO Youth and Family Services, Naperville, IL

Sgt. Russell Wolf, Naperville Police Department, Naperville, IL

Sarah Schriber, Policy Director, Illinois Safe Schools Alliance, Chicago, IL

Nancy Mullen, Executive Director, Youth Outlook, Naperville, IL

Charla Waxman, Director of Business Development, Linden Oaks at Edward Hospital, Naperville, IL



Date: February 25, 2011

Location: College of DuPage, Student Resource Center, Room 2800
http://home.cod.edu/Media/Website%20Resources/pdf/generalInfo/maps/full_campus.pdf
Use parking lot C off Fawell Boulevard.

Fee: \$0 **Registration is not required due to large capacity.**

Time: Doors open at 8 am. Workshop is from 8:30am until 3pm. Lunch will be on your own from 11:15-12:15. College cafeteria is available.

Schedule

8:30 am	Welcome
8:45 am	Dr. Erin Williams
10 am	Break
10:15	Dr. Erin Willims continued
11:15	Lunch
12:15	Panel
	12:15 Kathy Kempke
	12:35 Deb Carr
	12:55 Sgt. Russ Wolf
	1:15 Sarah Schriber
	1:35 Nancy Mullen
	1:55 Charla Waxman
	2:35 Q and A

CEU's: 5 CDPU's available, as well as 5 CEUS's for LCSW, LCPC, IAODAPCA, and CDVP

For further information contact: Karen Jarczyk at karenj@ncoyouth.org or Nancy Mullen at nancy.mullen@youth-outlook.org or Maryann Krieglstein at krieglsm@cod.edu

Funded in part by the Aberdeen Charitable Foundation

For Americans with Disabilities Act Accommodations, call 630-942-2141 or 630-858-9692 (TDD)

The college will not discriminate in its programs and activities on the basis of race, color, religion, creed, national origin, sex, age, ancestry, marital status, sexual orientation, arrest records, military status or unfavorable military discharge, citizenship status, physical or mental handicap or disability.

Partners of the Community Network

Chicago Lakeshore Hospital, College of DuPage, Compassionate Counseling, DuPage County Health Department, DuPage Unitarian Universalist Church, First Congregational UCC Naperville, Hope United Church of Christ Naperville, Illinois Safe School Alliance, Linden Oaks Hospital at Edward, Naperville Police Department, NCO Youth & Family Services, PFLAG Council of Northern Illinois, PFLAG DuPage, Wesley United Methodist Church Naperville, West Chicago Community Education Center, YWCA of Metropolitan Chicago Patterson & McDaniel Family Center, Youth Outlook